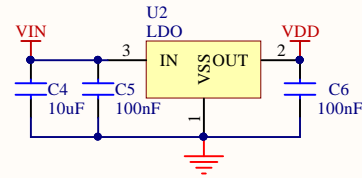
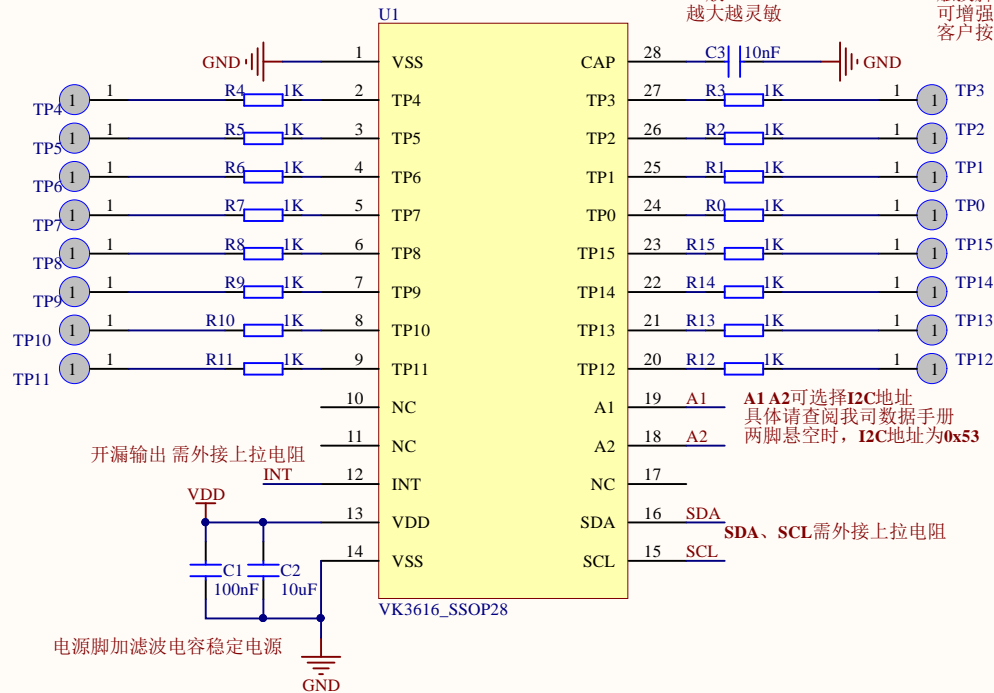


建议电源用LDO




C3用于调整体灵敏度  
一般1nF~47nF  
越大越灵敏

触摸脚上串接的电阻一般选用0-10K  
可增强抗干扰能力, 干扰严重增大阻值  
客户按需添加



Title: VK3618 参考电路		
Size: A4	Number: 1	VERSION: V10
Date: 2012.07.26	Time: 16:51:51	Sheet of 1
FILE: D:\工作\工程资料\TOUCH\滑条\VK3816\VK3616_SSOP28参考电路.SchDoc		



永嘉微电  
Vinka Microelectronics