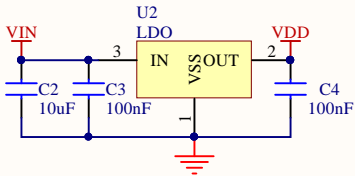
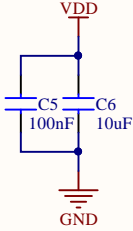


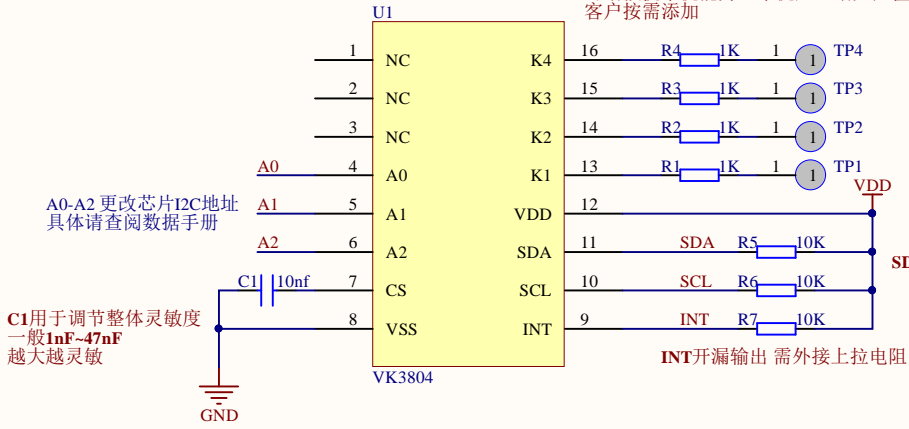
建议电源用LDO



电源脚加滤波电容稳定电源



触摸脚上串接的电阻一般选用0-10K  
可增强抗干扰能力，干扰严重增大阻值  
客户按需添加



SDA、SCL需外接上拉电阻

INT开漏输出 需外接上拉电阻

Title		
Size	Number	Revision
A4		
Date:	2025/9/13	Sheet of
File:	D:\工作\...\VK3804参考原理图.SchDoc	Drawn By: