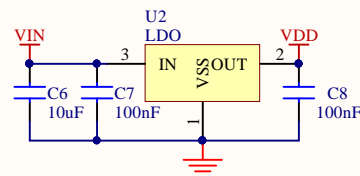
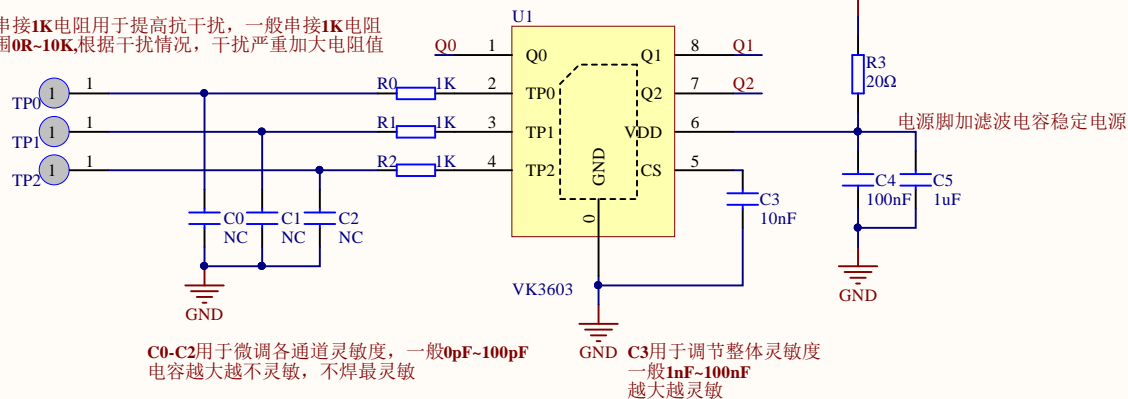


建议电源用LDO



触摸脚串接1K电阻用于提高抗干扰，一般串接1K电阻阻值范围0R~10K,根据干扰情况，干扰严重加大电阻值



Title: VK3603参考电路

Size: A4

Number: 1

VERSION: V10

Date: 2012.07.26

Time: 9:57:06

Sheet of 1

FILE: D:\工作\A工程资料\TOUCH\36系列\VK3603开发资料\VK3603参考电路.SchDoc

